

# Quick Start Guide for SnoopSoft Dashboard v3.0



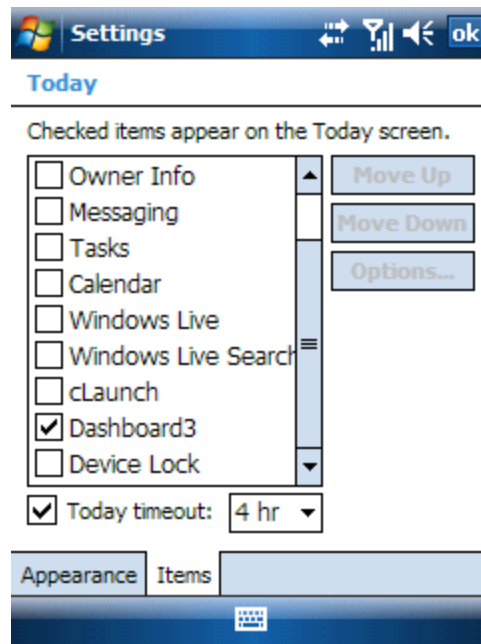
**S**noopSoft Dashboard v3.0 is a Windows Mobile application designed to quickly access the information that is most important and make it easy and fun to view.

First, unzip the compressed archive containing all the Dashboard installation files. Place them somewhere on your local PC. Once they are unzipped, run the SETUP.EXE file. This will load Microsoft's device connection software and cause the application to be installed to your device.

***NOTE: SnoopSoft recommends installing Dashboard to main memory on the device for proper operation with the Today page. Themes can be placed anywhere on the device including storage cards.***

Once Dashboard is installed, it will need to be activated if you wish to use it on the Today page. A standalone application is also installed if you wish to run it that way – they both do the same thing.

To activate Dashboard on the Today page, go to the START menu and select the SETTINGS option. Bring up the TODAY settings and switch to the ITEMS tab. Deselect all the currently active Today modules (they can be re-enabled inside Dashboard) and select Dashboard3 (see below).

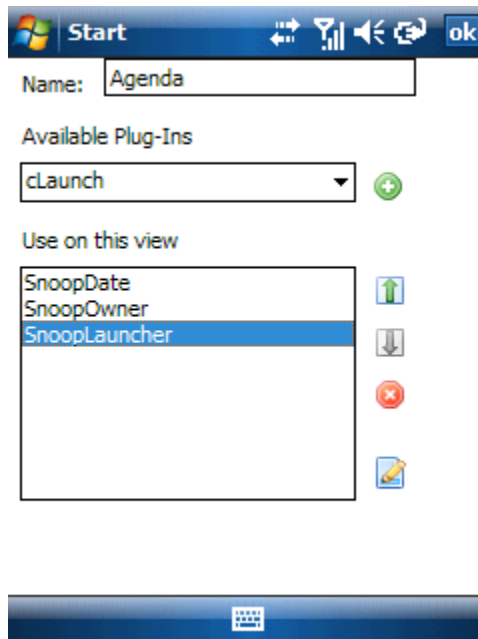


Close out of the Today Settings applet and the Settings application. The Today page will refresh in a minute or two once Dashboard is fully loaded.

## Setting up Dashboard the first time



Now that Dashboard is up and running, the screen should be completely blank with the default Theme displayed in the background. If a view has not yet been configured, it will contain the default text on it that allows you to quickly go to the View Options dialog to configure the view. Tap on the text to go there.



To add plug-ins into the view, simply select them from the **Available Plug-Ins** drop list and tap the **Plus** icon to add them to the **Use on this View** list below. The Use on this View list

contains all the plug-ins that will be displayed within the view on Dashboard's main screen. The order of the items in the list is the same order that they will be displayed on the main screen.

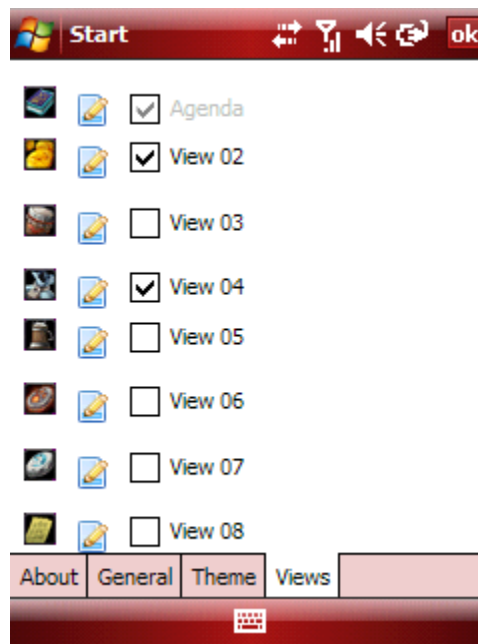
### Note

Dashboard will not scroll the screen. If there are more plug-ins selected than will fit on the display then the ones that do not fit will not be drawn.

To alleviate confusion, Views can also be named.

Once a view is configured, the “*Tap here to setup this view*” default text will no longer be displayed. You can always get back to the Options by tapping on the colored Dashboard view icon along the bottom of the screen. The grayscale icons allow for the view to be changed and the colored icon indicates the current view. Tapping on the one that is in color will bring up the Options dialog.

Once the Options dialog is displayed, select the **Views** tab along the bottom.



Next, select one of the views and tap on its Options icon (the paper & pencil icon).

This brings up the View Configuration dialog where the view can be configured.

That's it for the quick setup. More comprehensive information on the various options can be found in the main [Dashboard manual](#).